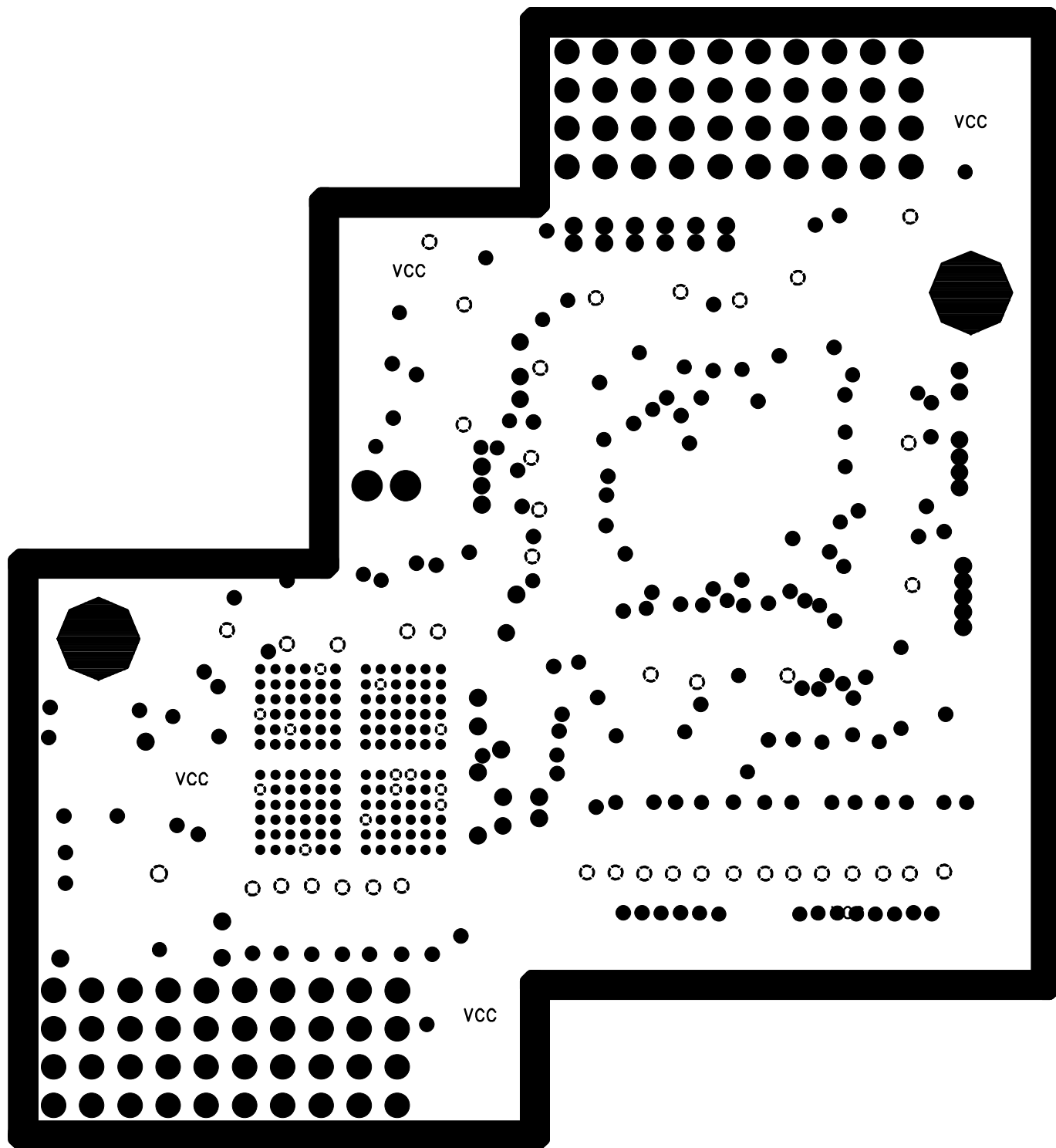
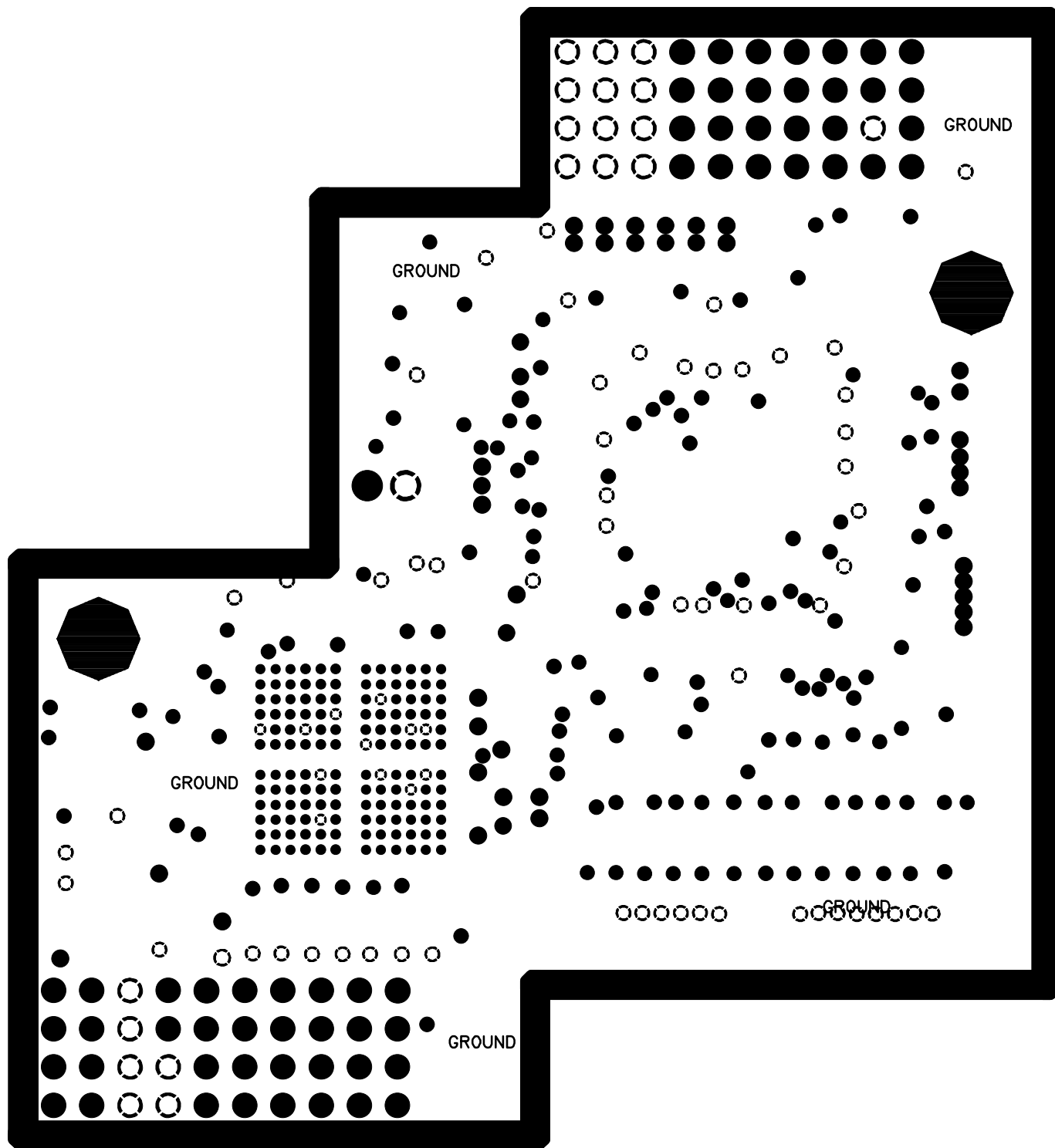


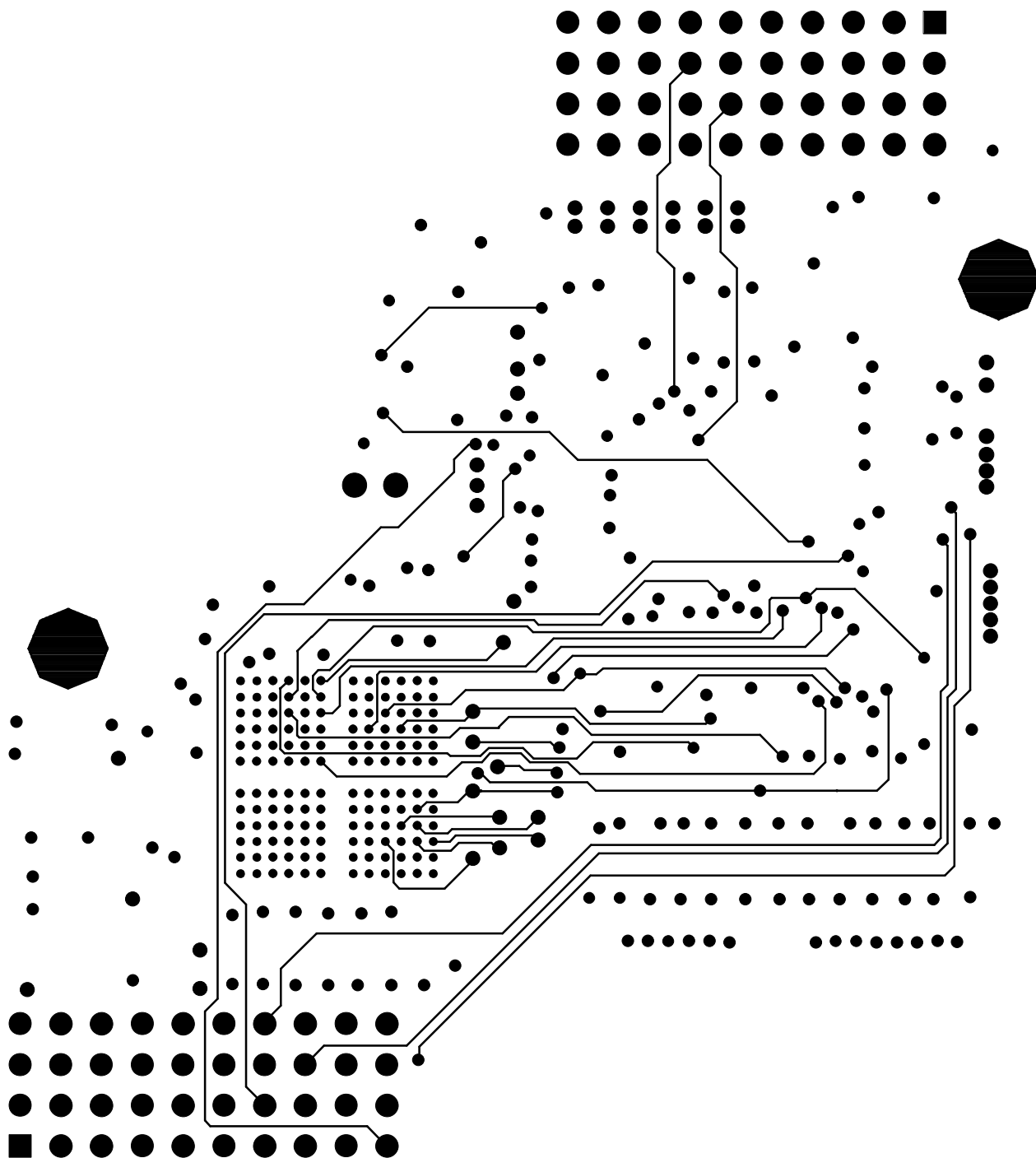
Film1: Top Component Layer, (SIGNAL\_1)



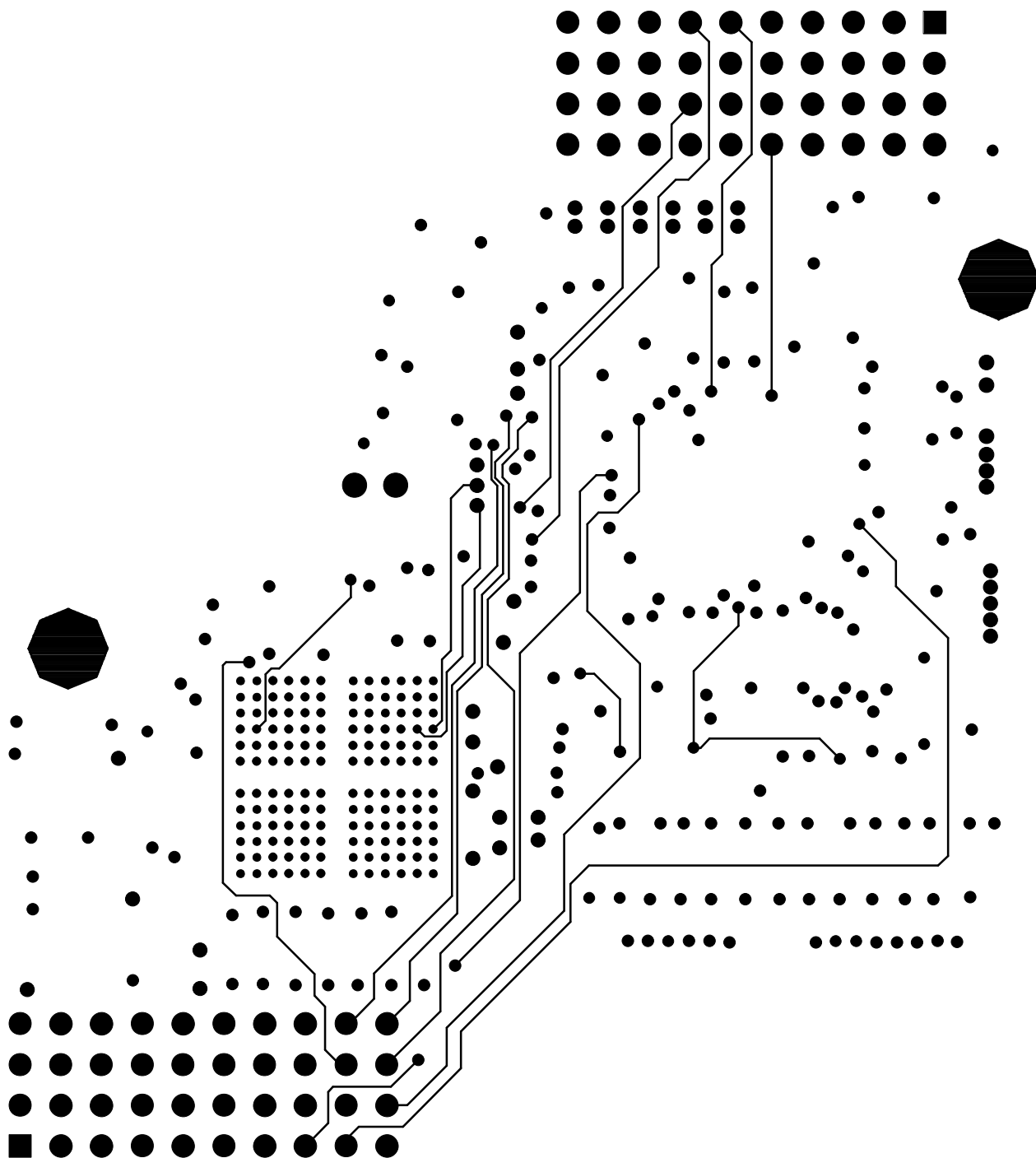
Film2: Power Plane (VCC)



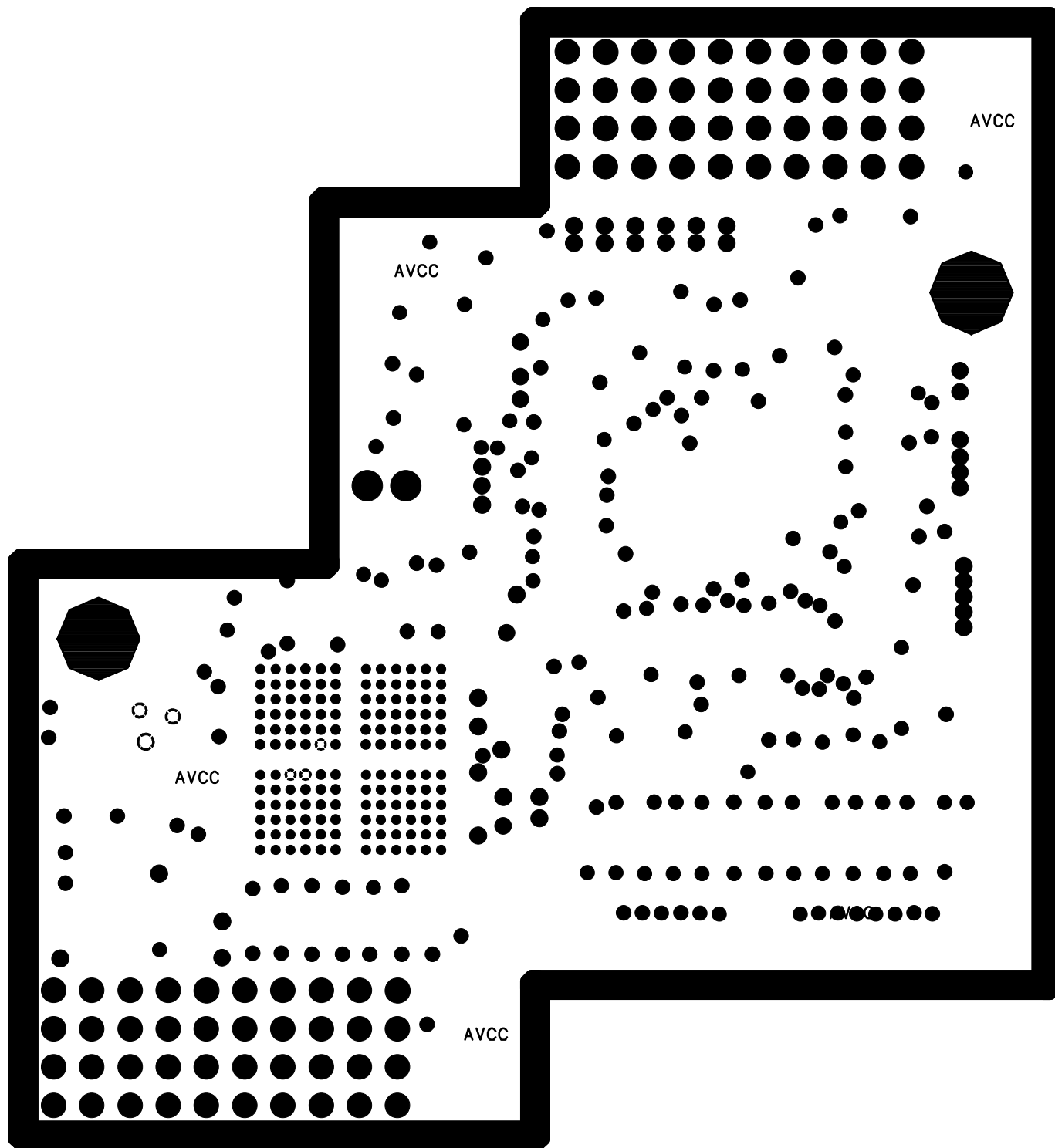
Film3: Power Plane (GROUND)



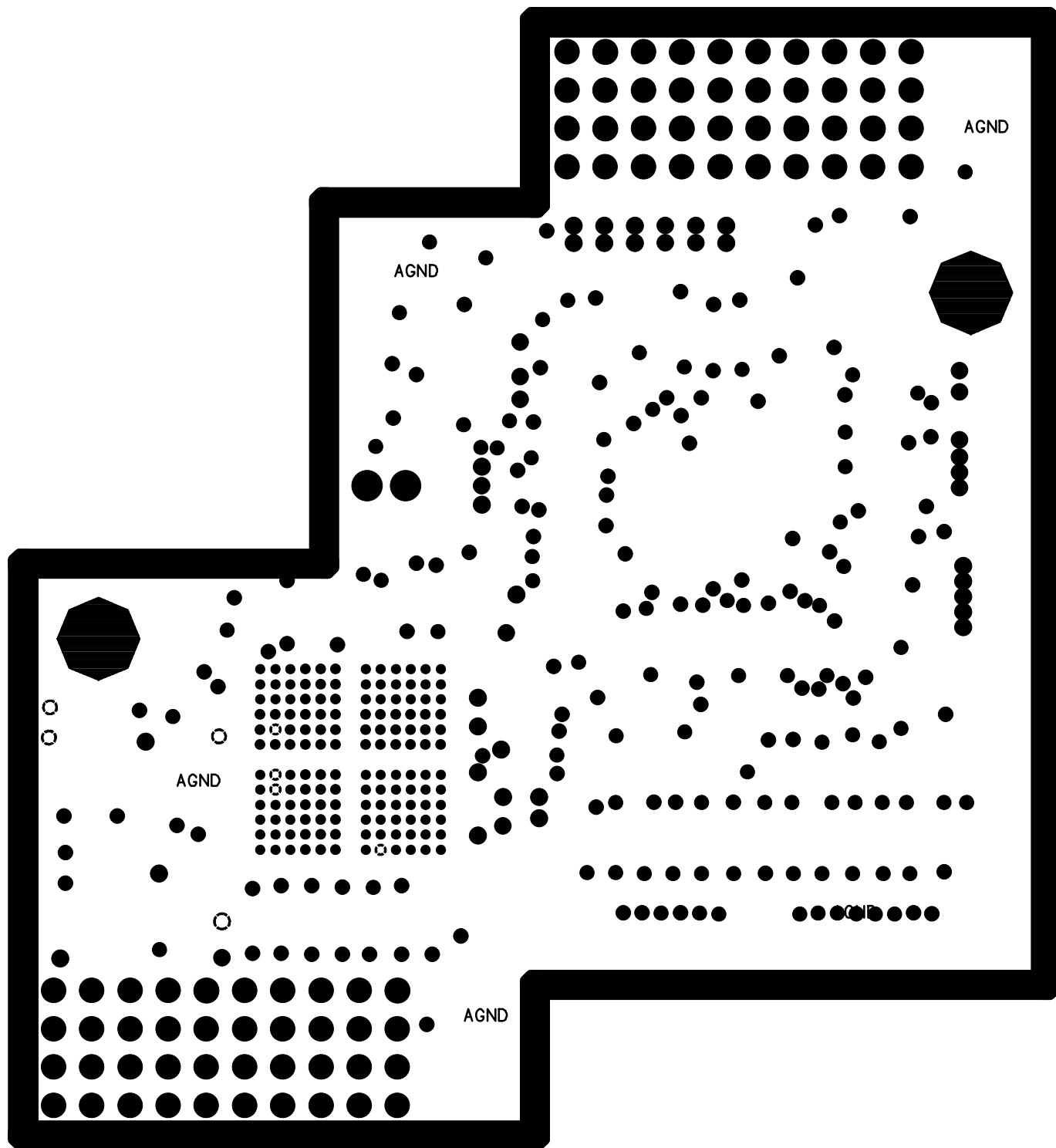
Film4: Inner Signal Layer (SIGNAL\_3)



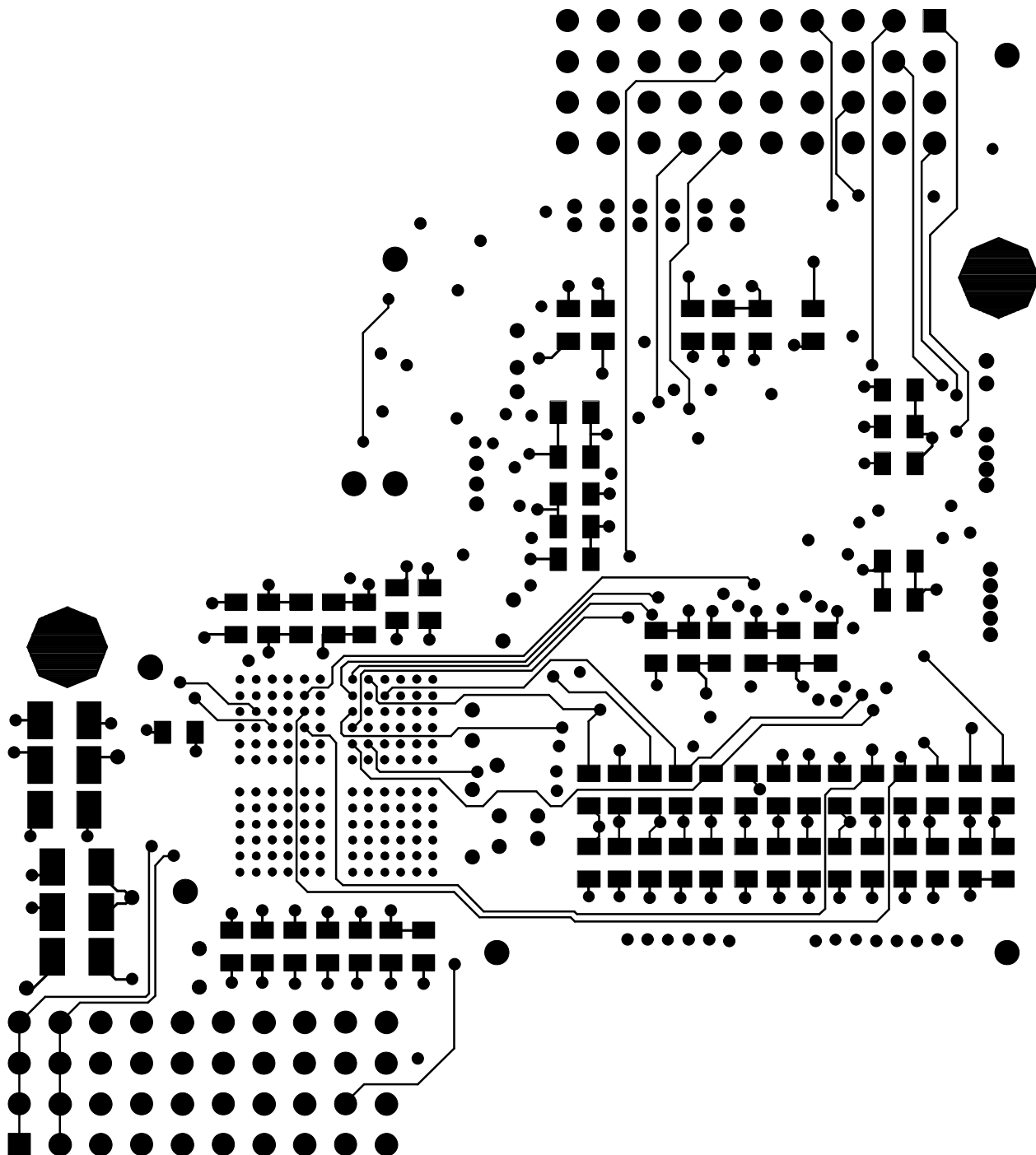
Film5: Inner Signal Layer (SIGNAL\_4)



Film6: Power Plane, (AVCC)

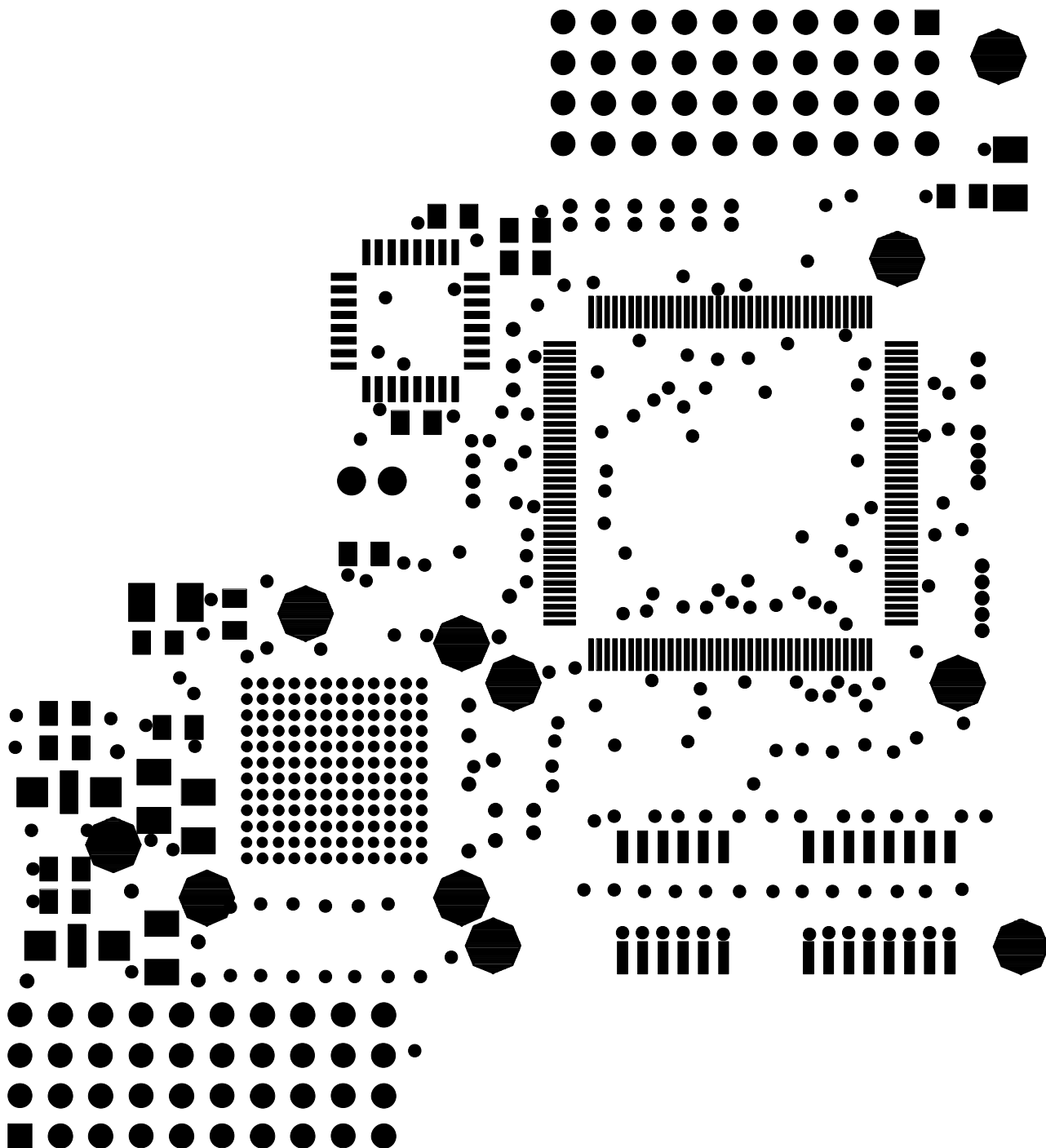


Film7: Power Plane, (AGND)

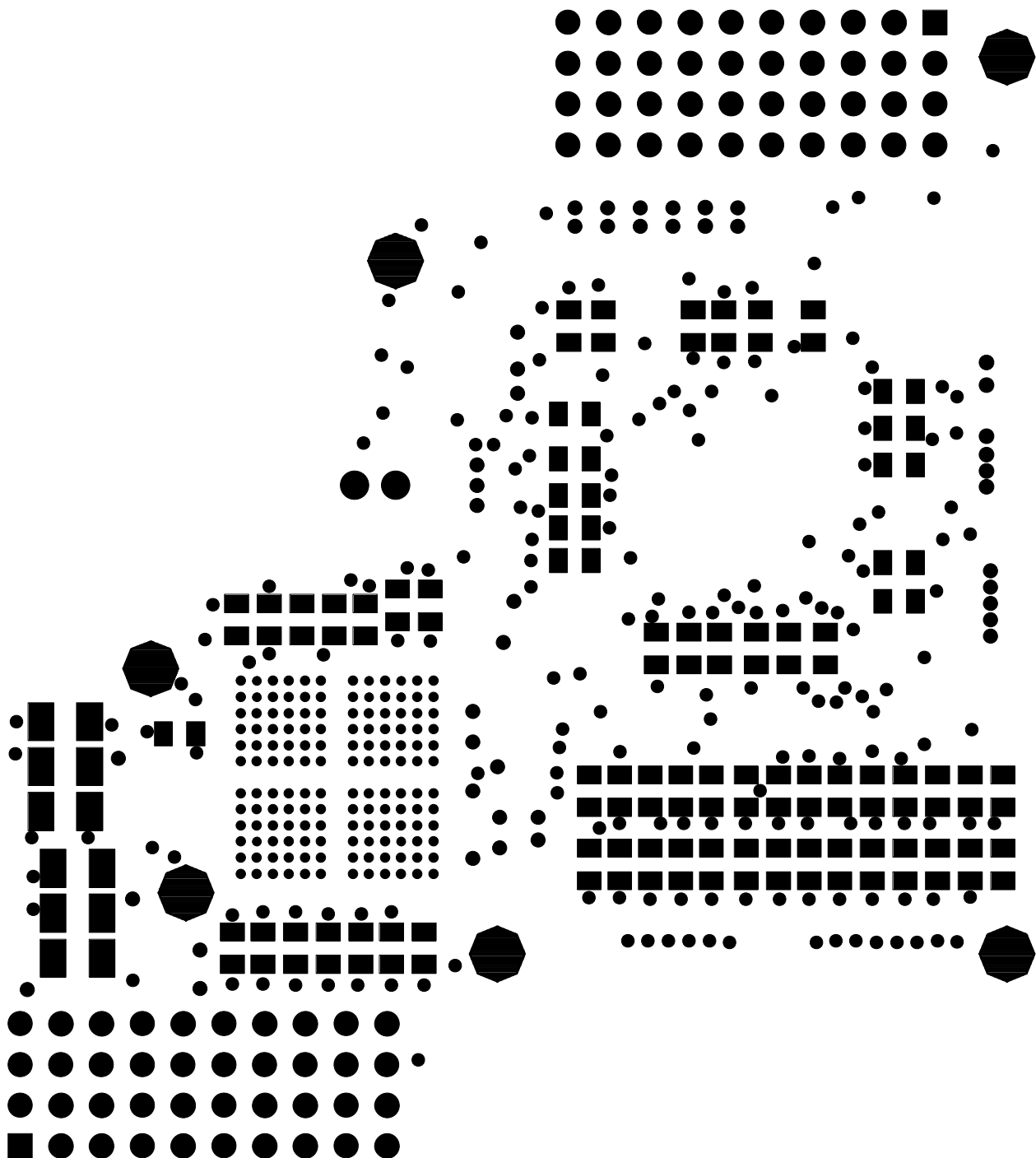


Film8: Bottom Component Layer, (SIGNAL\_2)

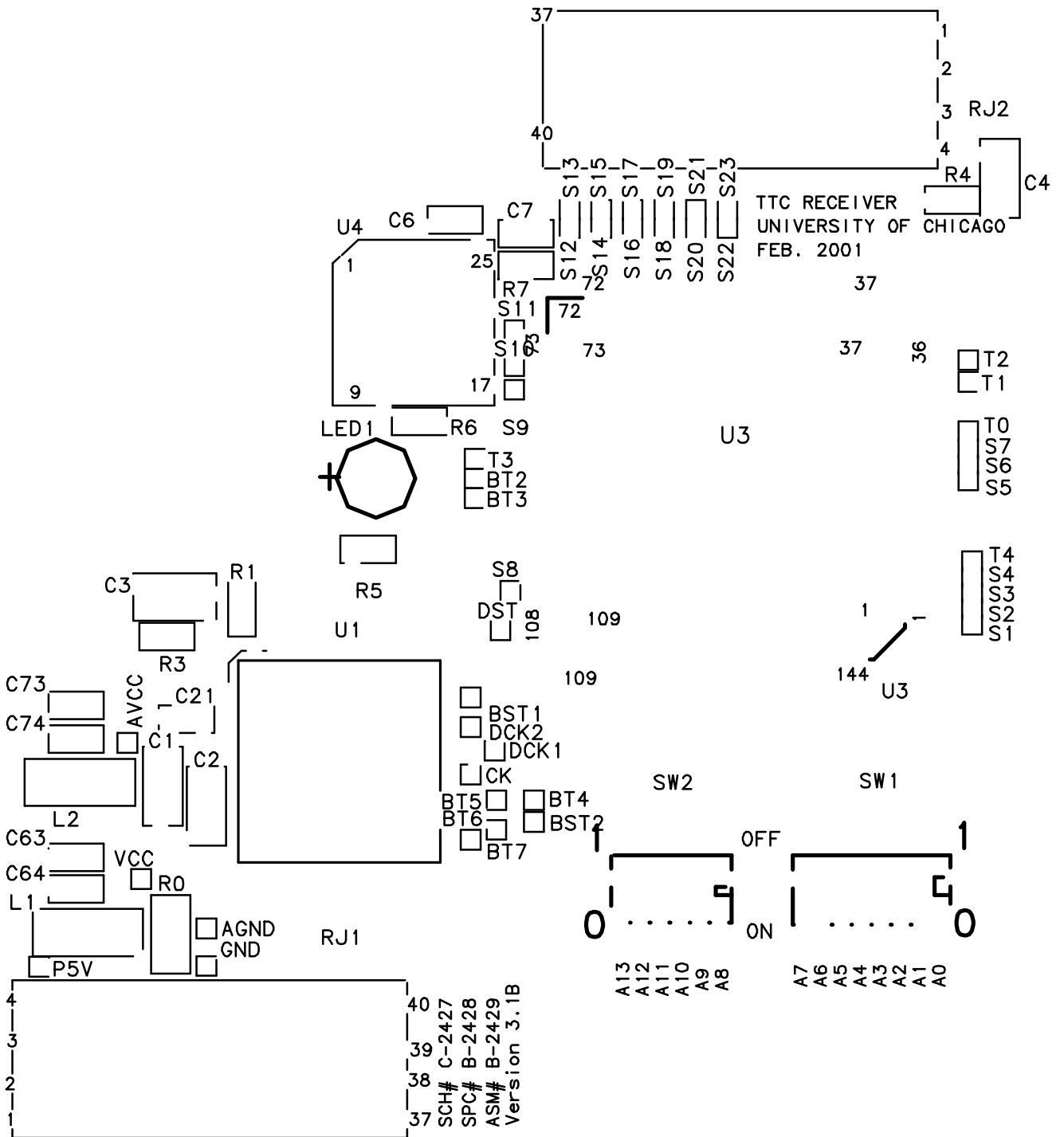




Film9: Top Solder Mask (SOLDER\_MASK\_1)



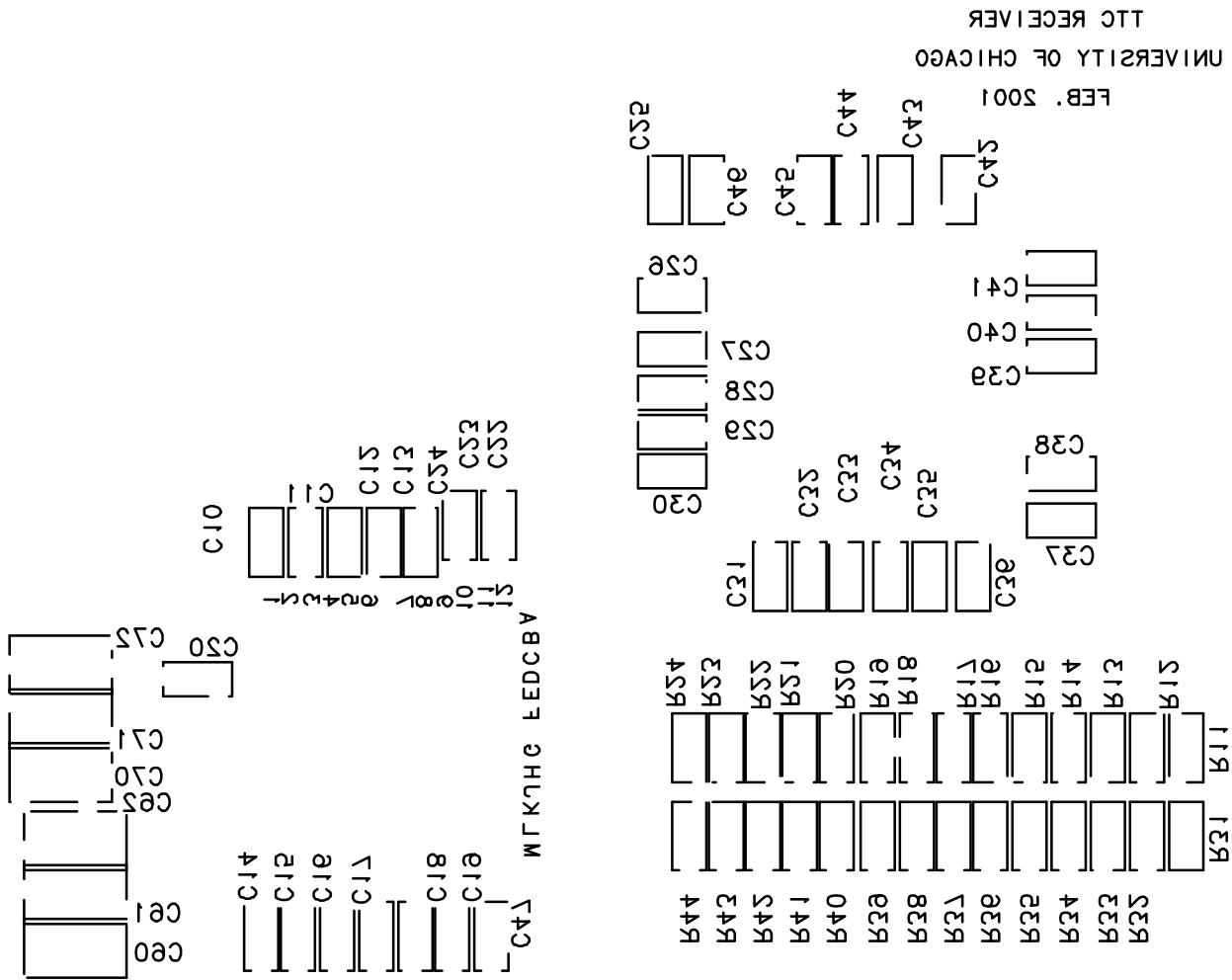
Film10: Bottom Solder Mask (SOLDER\_MASK\_5)



Film11: Top Silkscreen, (SILKSCREEN\_1)

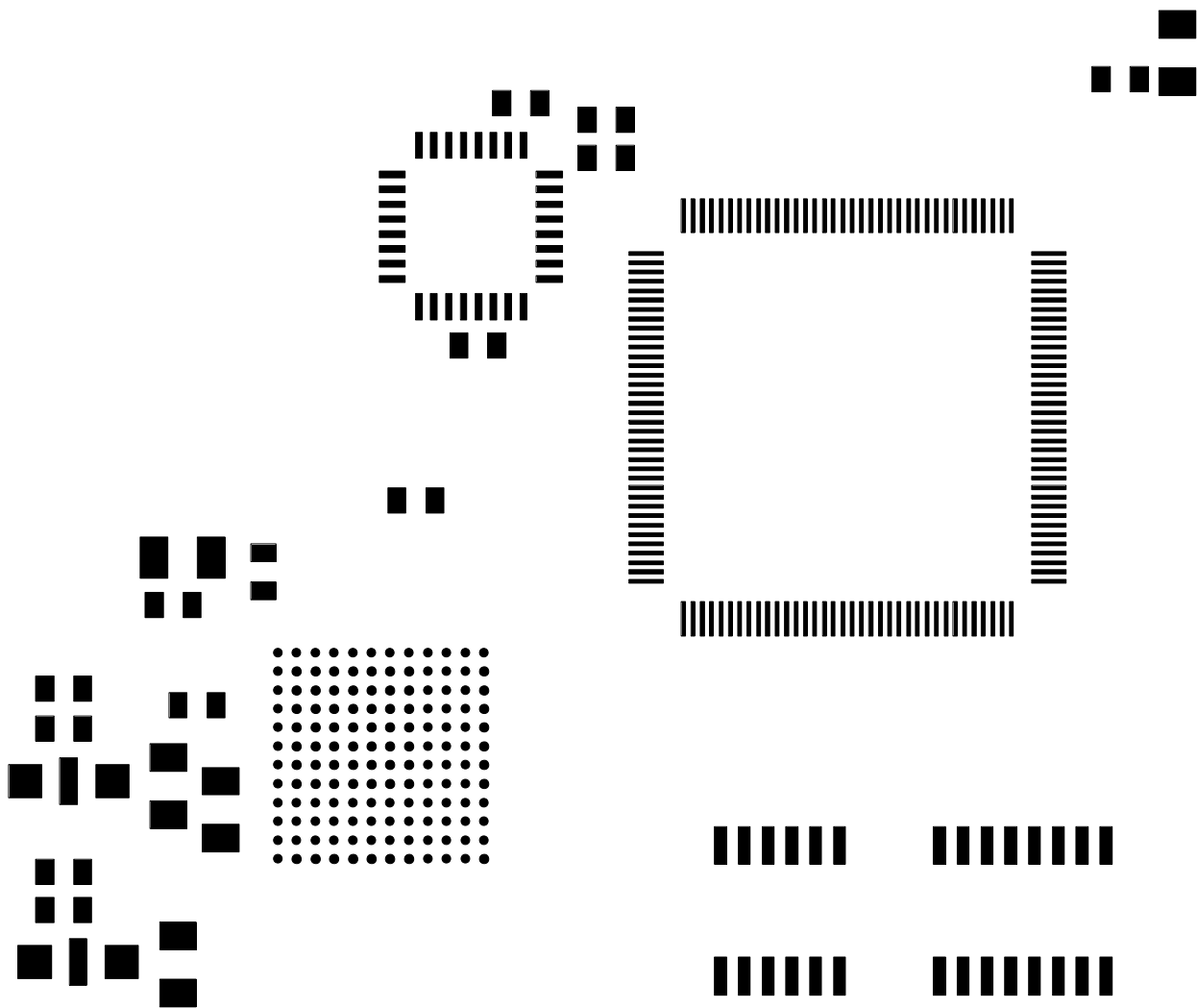
Film12: Bottom SilkScreen (SILKSCREEN\_2)

2CH # C-5451  
 25C # B-5458  
 A2M # B-5450  
 Version 3.1B

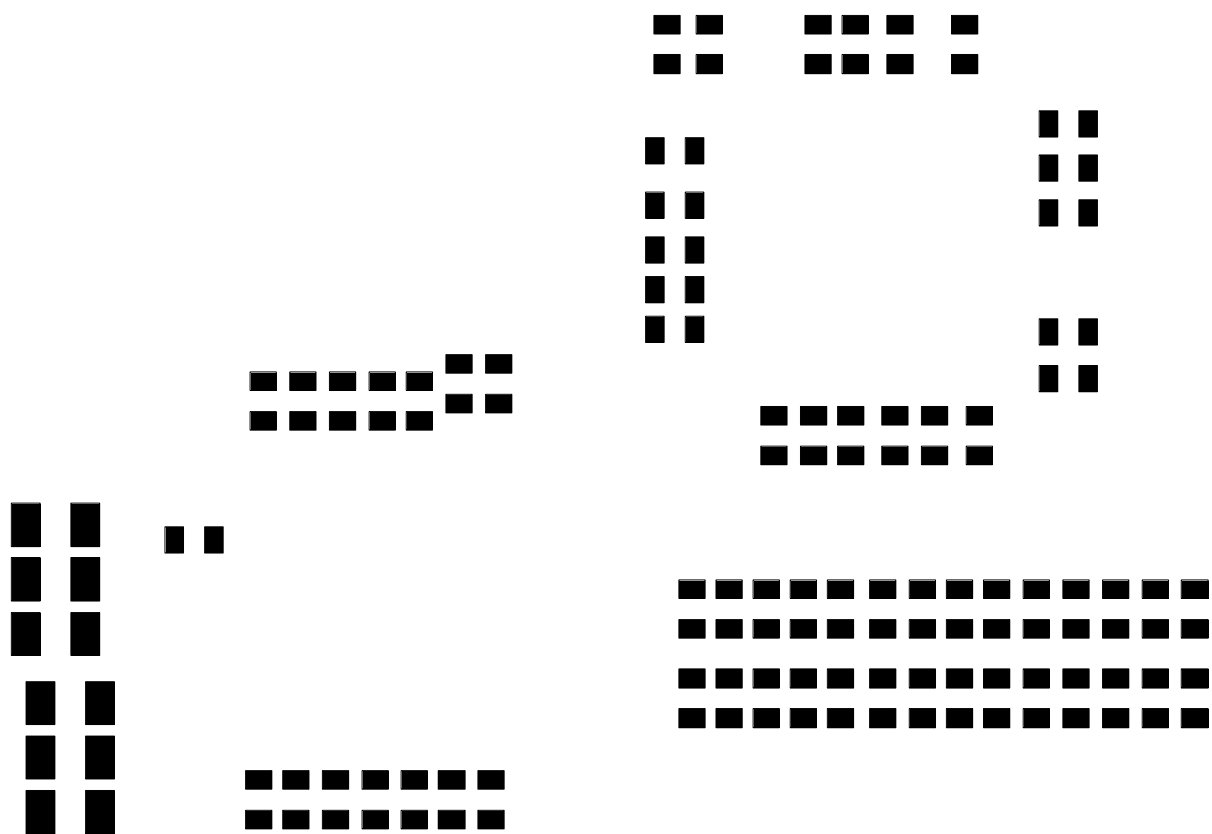


UNIVERSITY OF CHICAGO  
 FEB. 2001

TTC RECEIVER



Film11: Top Paste Mask (Paste\_mask1)



Film12: Bottom Paste Mask (Paste\_mask2)

