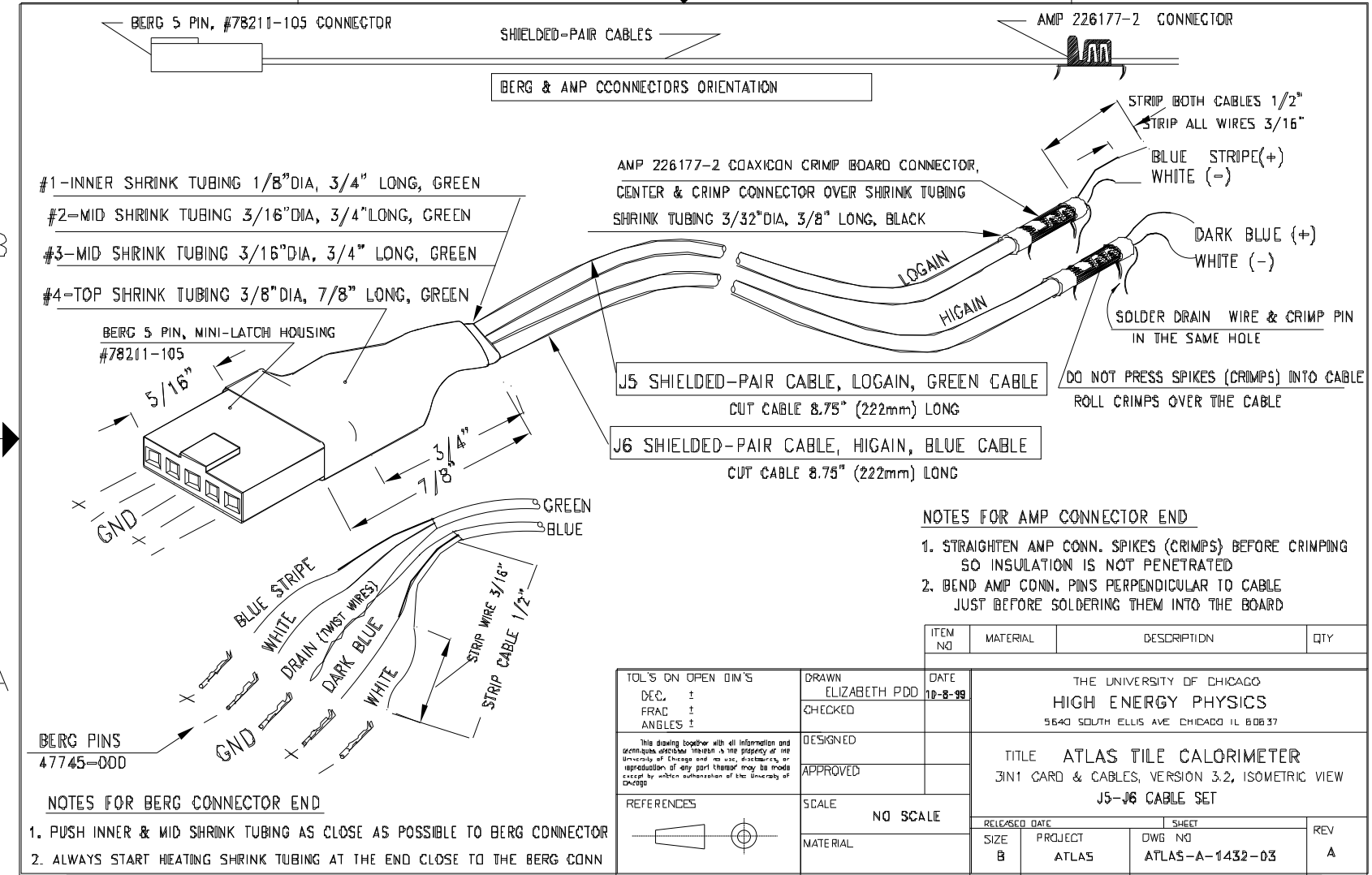
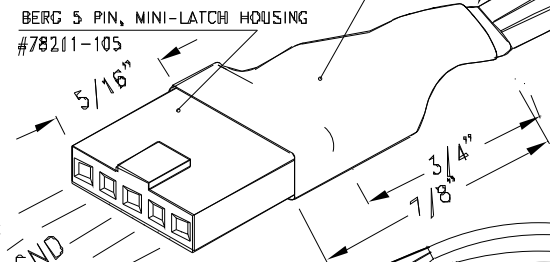


4 | 3 | 2 | 1



- #1-INNER SHRINK TUBING 1/8" DIA, 3/4" LONG, GREEN
- #2-MID SHRINK TUBING 3/16" DIA, 3/4" LONG, GREEN
- #3-MID SHRINK TUBING 3/16" DIA, 3/4" LONG, GREEN
- #4-TOP SHRINK TUBING 3/8" DIA, 7/8" LONG, GREEN



AMP 226177-2 COAXICON CRIMP BOARD CONNECTOR,
CENTER & CRIMP CONNECTOR OVER SHRINK TUBING
SHRINK TUBING 3/32" DIA, 3/8" LONG, BLACK

J5 SHIELDED-PAIR CABLE, LOGAIN, GREEN CABLE
CUT CABLE 8.75" (222mm) LONG

J6 SHIELDED-PAIR CABLE, HIGAIN, BLUE CABLE
CUT CABLE 8.75" (222mm) LONG

STRIP BOTH CABLES 1/2"
STRIP ALL WIRES 3/16"
BLUE STRIPE (+)
WHITE (-)
DARK BLUE (+)
WHITE (-)
SOLDER DRAIN WIRE & CRIMP PIN
IN THE SAME HOLE

DO NOT PRESS SPIKES (CRIMPS) INTO CABLE
ROLL CRIMPS OVER THE CABLE

NOTES FOR AMP CONNECTOR END

1. STRAIGHTEN AMP CONN. SPIKES (CRIMPS) BEFORE CRIMPING SO INSULATION IS NOT PENETRATED
2. BEND AMP CONN. PINS PERPENDICULAR TO CABLE JUST BEFORE SOLDERING THEM INTO THE BOARD

BERG PINS
47745-000

NOTES FOR BERG CONNECTOR END

1. PUSH INNER & MID SHRINK TUBING AS CLOSE AS POSSIBLE TO BERG CONNECTOR
2. ALWAYS START HEATING SHRINK TUBING AT THE END CLOSE TO THE BERG CONN

TOL'S ON OPEN DIM'S DEC. ± FRAC ± ANGLES ±	DRAWN ELIZABETH PDD	DATE 10-8-99	THE UNIVERSITY OF CHICAGO HIGH ENERGY PHYSICS 5640 SOUTH ELLIS AVE CHICAGO IL 60637	
	CHECKED			
This drawing together with all information and annotations described herein is the property of the University of Chicago and no use, distribution, or reproduction of any part thereof may be made except by written authorization of the University of Chicago.	DESIGNED		TITLE ATLAS TILE CALORIMETER JIN1 CARD & CABLES, VERSION 3.2, ISOMETRIC VIEW J5-J6 CABLE SET	
	APPROVED			
REFERENCES	SCALE NO SCALE	RELEASED DATE		SHEET DWG NO ATLAS-A-1432-03
	MATERIAL	SIZE B	PROJECT ATLAS	

ITEM NO	MATERIAL	DESCRIPTION	QTY

4 | 3 | 2 | 1